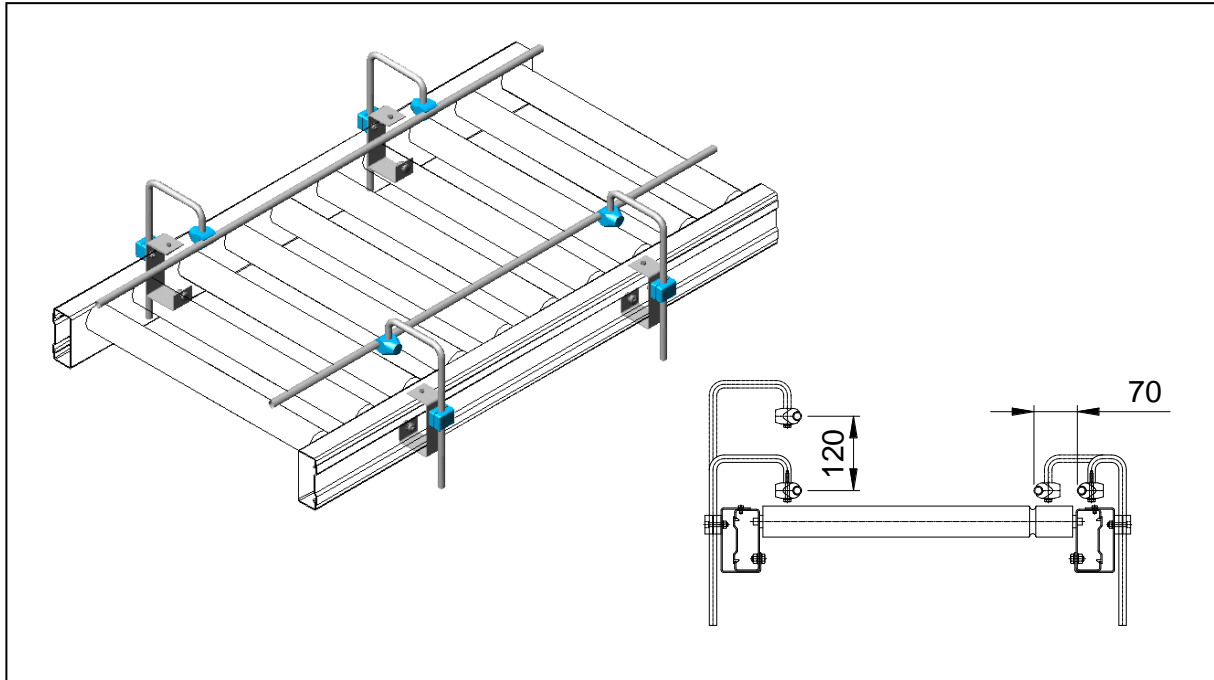


AX100 – Lateral guiding, adjustable Type JSS



Area of usage:

Adjustable lateral guides are used to keep the transport goods in its place on the conveyor or to guide the goods in the conveying direction.

Technical data:

Design:	Stainless tube Ø14x1 mm. Suspension iron Ø12 mm. Brackets in 2 mm plates.
Attachment:	Max length between attachments 1000 mm.

Surface treatment:

Zinc plated and stainless.

Other:

Note! The article number is for 1 m of lateral guide. Twice the length is needed for both sides of the conveyor.

Article number:

AXJSS0001000

Ensure the article number is stated when ordering.