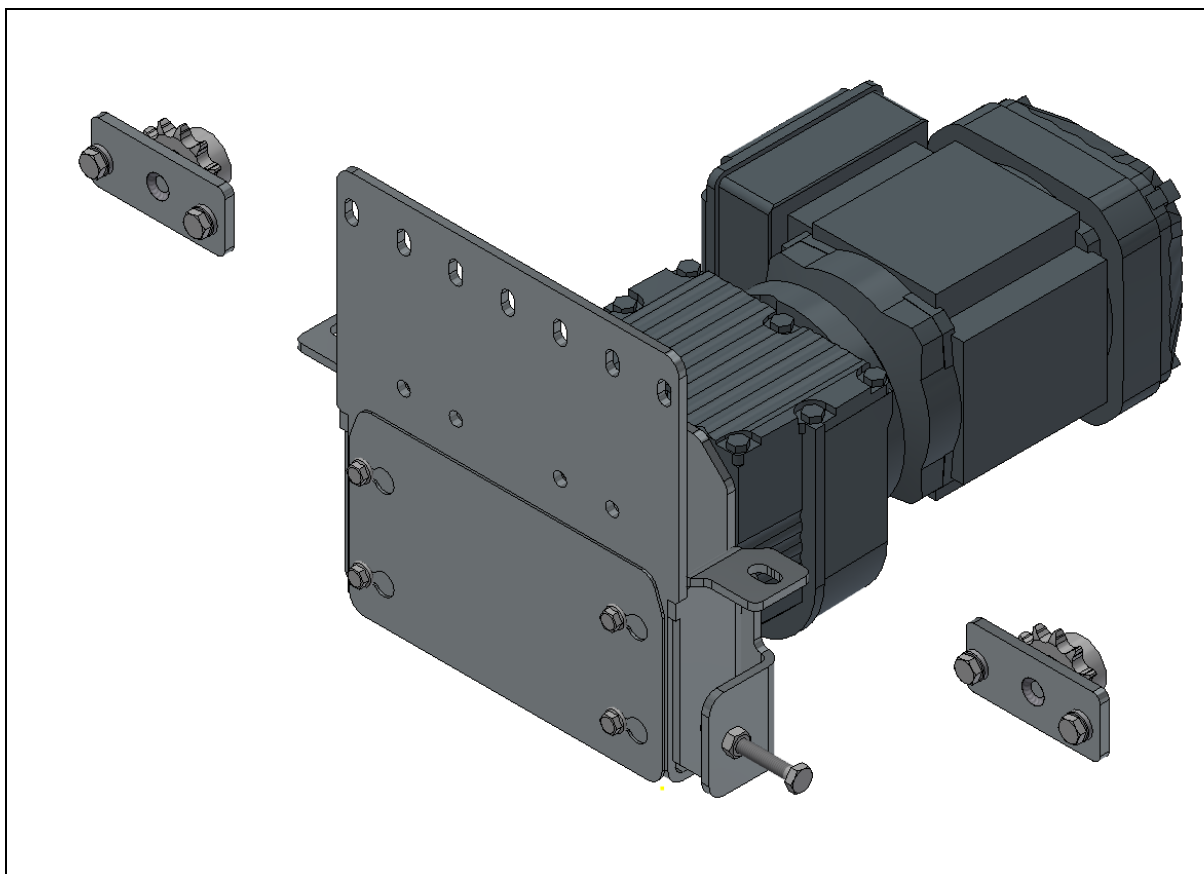


KE 500 – Drive station underlying, frame mounted – Type DUS



Area of application:

For the drive of fixed driven roller conveyor – KE 500 type FD – and driven accumulating roller conveyor – KE 500 type DA.

Technical data:

Motor type:	Gear motor and worm gear motor
Chain transmission:	1/2"
Engine powers:	0.25, 0.37, 0.55 and 0.75 kW.
Voltage:	230/400 V _{AC} , 50 Hz.
Protection class:	IP55.
Transport speeds:	6, 8, 10, 12, 14 and 16 m/min
Conveyor length:	Maximum 10,800 mm per drive.
Transport height:	At least 350 mm. Contact MH Modules for inspection at lower transport heights