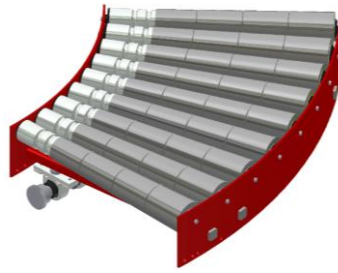
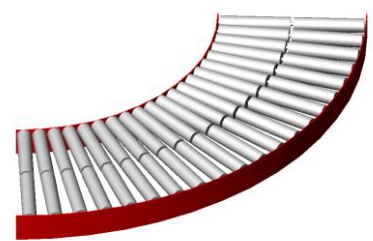


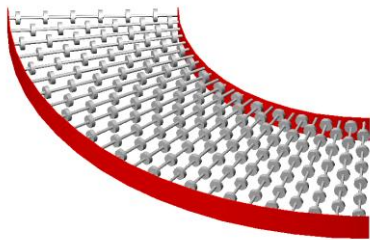
AX100 – Kurva, driven 90°
Typ DKA *



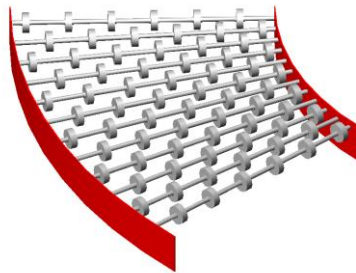
AX100 – Kurva, driven 45°
Typ DKA *



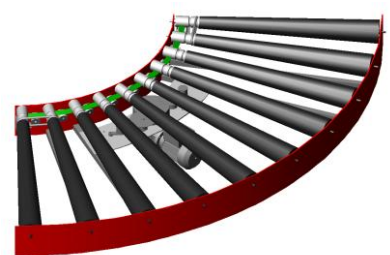
AX100 – Kurva, odreven med
delade rullar 90° *



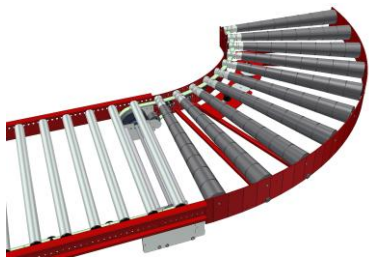
AX100 – Kurva, odreven hjulkurva
90° Typ HJK *



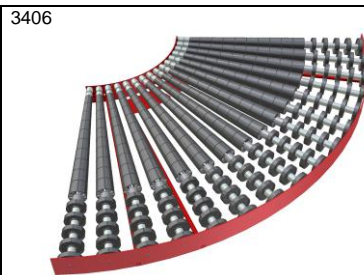
AX100 – Kurva, odreven hjulkurva
45° Typ HJK *



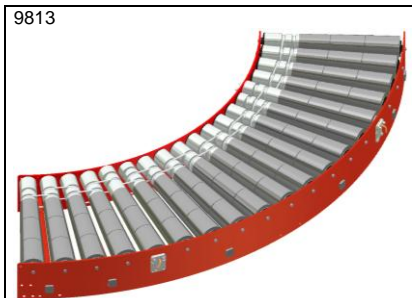
FR100 – Kurva, driven 90°
Typ DKA *



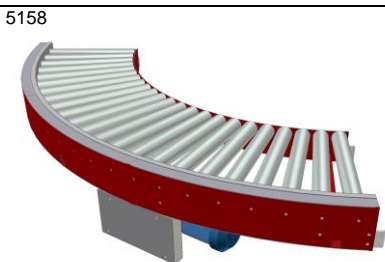
FR100 – Kurva, slavdriven 90°



FR100 – Kurva, driven 90°. Stor
rullängd



ZP100 – Driven kurva med 24 V
drivna rullar



KE100 – Kurva, driven 90°

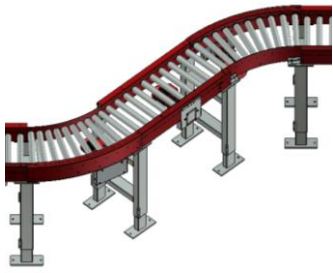


KE100 – Kurva, driven 90°. Med
små odrivna stödrullar mellan de
drivna rullarna



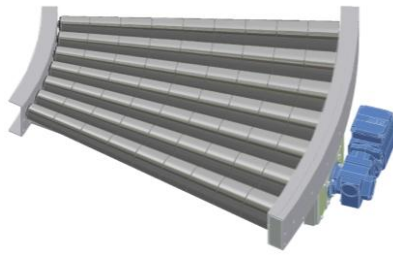
KE500 – Kurva, driven 90°. Med
små odrivna stödrullar mellan de
drivna rullarna

8953



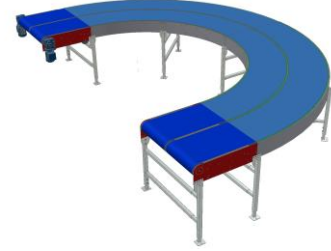
KE500 – Kurva, driven 45°

10459



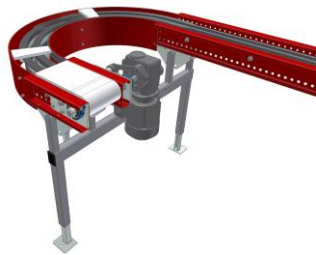
KE500 – Kurva, driven 45°. Rullar med koniska plastsegment

5298



PL100 – Dubbla plastlamelltransportörer, kurvor med olika hastigheter

5662



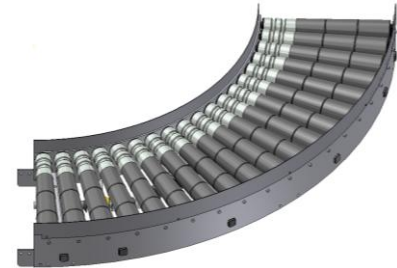
PL100 – Plastlamelltransportör med 180° kurva

7070



PL100 – Plastlamelltransportör med 45° kurvor

7792



AX100 Rostfritt – Kurva, driven 90°